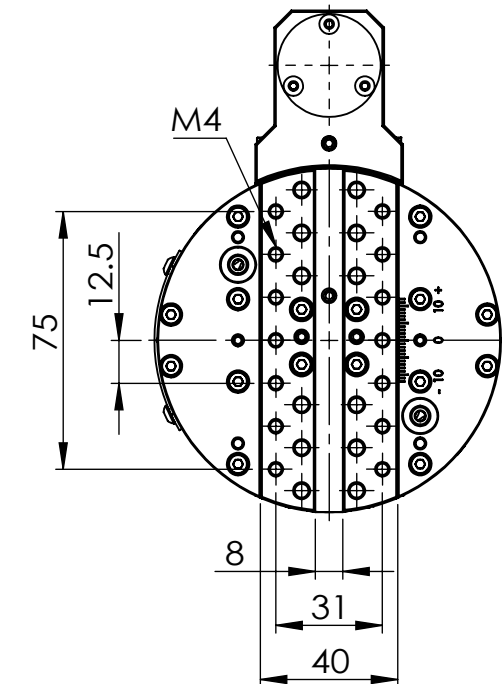
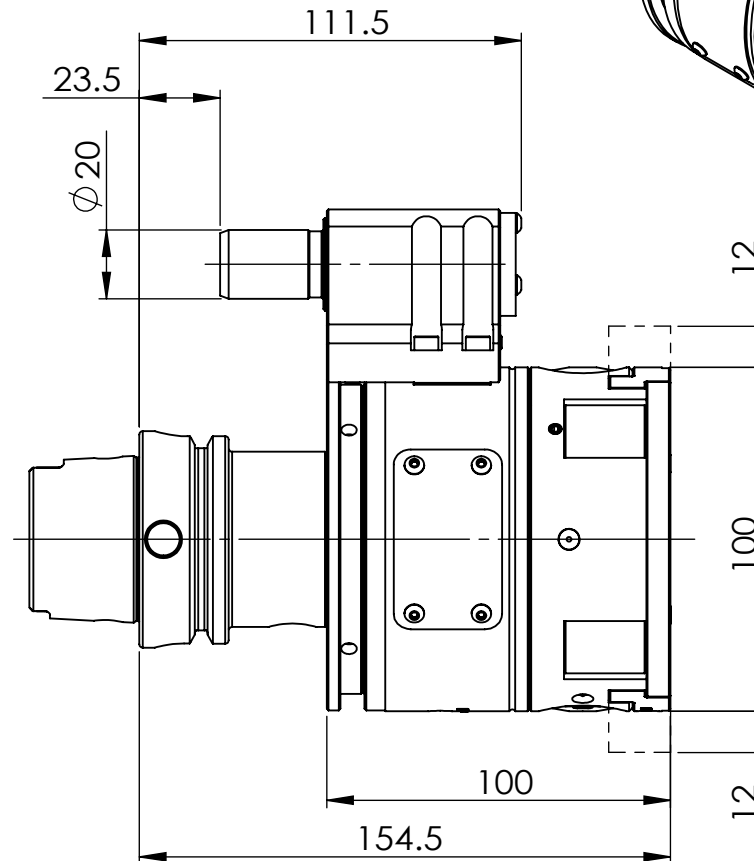
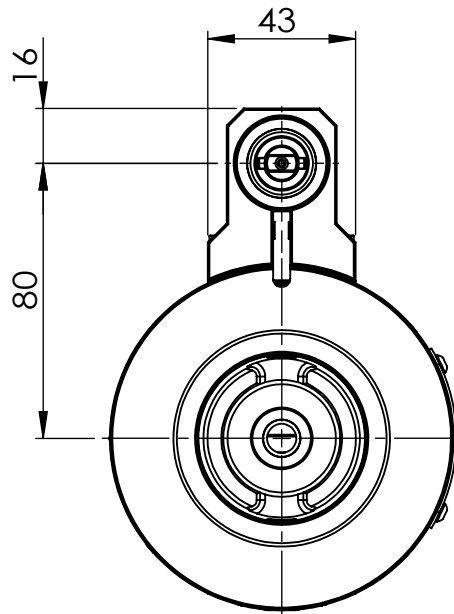


TECHNICAL FEATURES :
 Max speed : 2000rpm
 Max torque : 400Nm
 Radial force : 150 kg
 Feed : 1~500 mm/min
 Max workable ϕ : 200mm



Machine type :



豪力輝工業股份有限公司
HOLD WELL INDUSTRIAL CO.,LTD
 E-mail : sales@mail.holdwell.com
<http://www.holdwell.com>

品號
Model No.
 品名
Description

BHA-HSK63-100

U軸搪削頭-HSK63-A100型
 Boring and facing head-A type