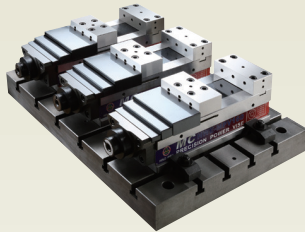
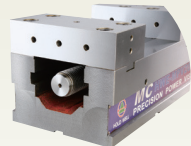


Interchangeable Jaw design. Various jigs for many uses can be installed on Vise. Jaw is made of Alloy Steel and its hardness is HRC52-56.



The tolerance of matched height is within $\pm 0.01\text{mm}$. Can combine many sets together for simultaneous processing to improve production efficiency.



Base with U-shape design enhances structure rigidity and reduces distortion. Rigid material Vise body is made of ductile iron FCD65. High tensile strength and no distortion.

Powerful down thrust Leaf-Spring mechanism eliminates workpiece lifting.



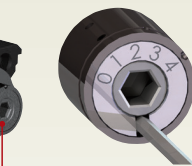
The parallelism and squareness of slots beneath vise base are very precise. Vise can be quickly positioned and fixed on the machining tables.



Short body with large Jaw-Opening is suitable for large & small machine center.

Both slideways flame hardened to HRC50~56 can resist wear and maintain accuracy for long.

Easy and quick adjustment of 5 different clamping forces.



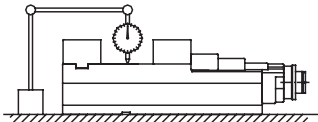
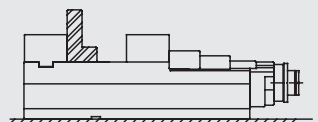
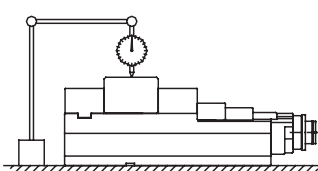
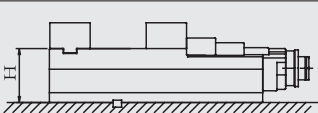
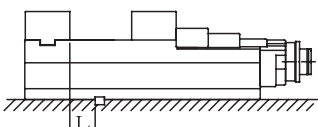
Mechanical Pressure Booster system enhances efficiency and eliminates losing power.



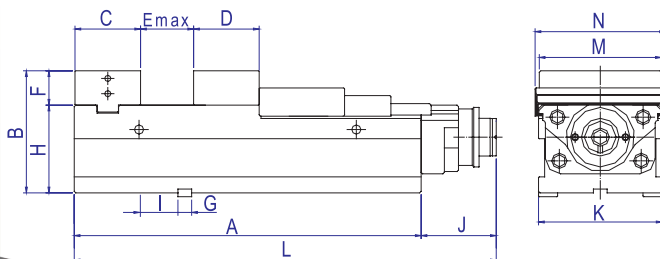
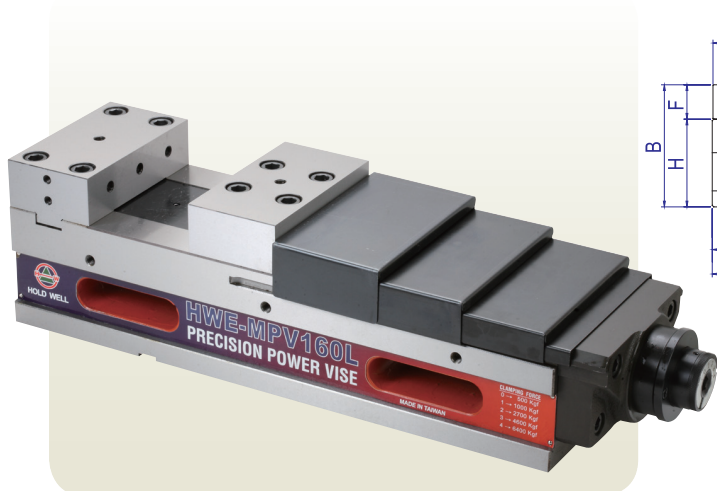
An enlarged double thread master screw rod could make Movable Jaw move forward and backward fast. High rigidity.



Accuracy Inspection

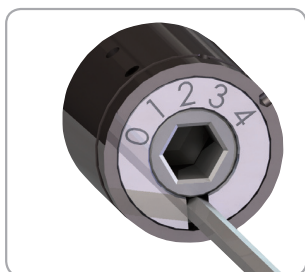
| Inspection Items | | Tolerance | |
|------------------|-------------------------------------------------------------------------------------|-------------------------------------------------|-------------|
| 1 |  | Parallelism : slideways to Vise bed | 0.005/100mm |
| 2 |  | Squareness : between slideways and fixed jaw | 0.01/100mm |
| 3 |  | Workpiece Lifting | 0.015mm |
| 4 |  | H : Height of the body | ±0.01mm |
| 5 |  | L : Length between fixed jaw and slot | ±0.02mm |

HWE-MPV160L / 200L



| Model NO. | A | B | C | D | E max | F | G | H | I | J | K | L | M | N | N.W.(kg) |
|-------------|-----|-----|-----|----|-------|----|----|-----|----|------|-----|-------|-----|-----|----------|
| HWE-MPV160L | 535 | 160 | 86 | 86 | 355 | 45 | 18 | 115 | 49 | 98.5 | 162 | 633.5 | 160 | 174 | 66 |
| HEW-MPV200L | 610 | 180 | 100 | 97 | 405 | 55 | 18 | 125 | 66 | 98.5 | 202 | 708.5 | 200 | 214 | 103 |

Unit : mm



Clamping Force Table

| Model NO. / Setting | 0 | 1 | 2 | 3 | 4 |
|---------------------|-----|------|------|------|------|
| HWE-MPV160L | 500 | 1800 | 3200 | 4600 | 6000 |
| HWE-MPV200L | 500 | 2200 | 3800 | 5500 | 7000 |

Unit : kgf

Clamping Force Setter

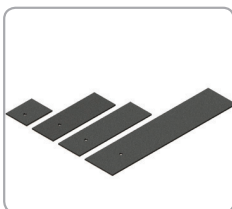
Standard Accessory



Eye Bolts



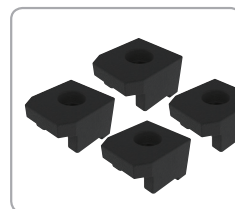
Wrench



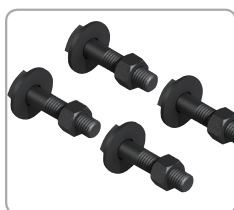
Slide Cover



Positioning Block



Clamps



T-Nut & Screw



Handle Set