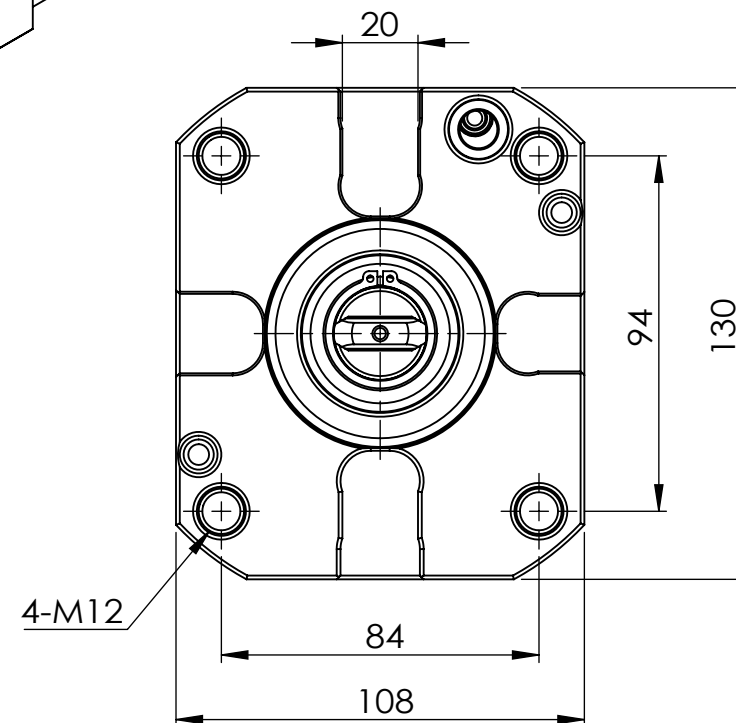
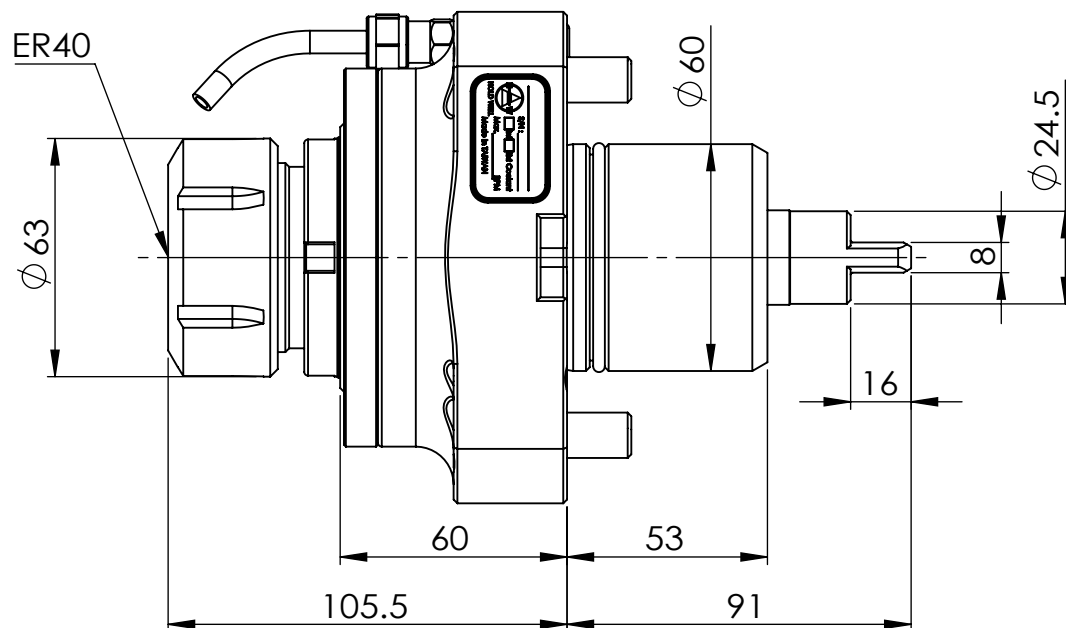
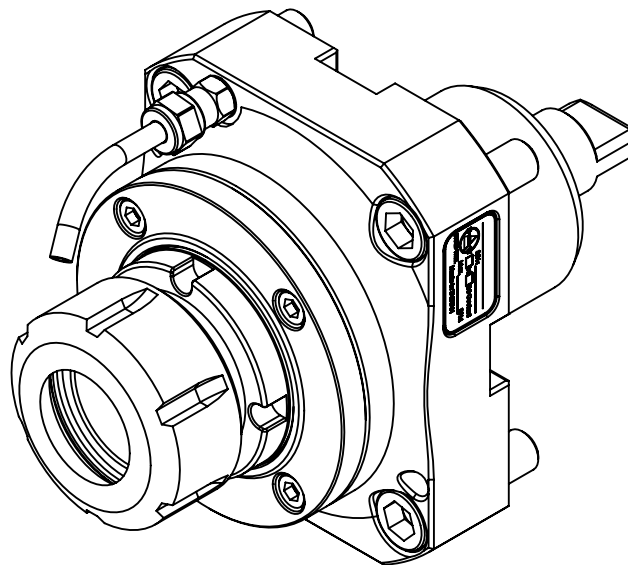


TECHNICAL FEATURES :  
 Max speed : 6000rpm  
 Max torque : 80Nm  
 Output : ER40  
 Coolant : Exenteral



**Machine type :**

NL1500/2000/2500/3000 12 STAZION - NLX1500/2000/2500/3000 12 STAZION - NLX4000 - NZL2000/2500 - NZX2500 - NT4000/5000 SERIES



**豪力輝工業股份有限公司**

**HOLD WELL INDUSTRIAL CO.,LTD**

E-mail : sales@mail.holdwell.com

<http://www.holdwell.com>

**品號**

Model No.

**品名**

Description

**THM-A06-60G**

Mori Seiki60-ER40 軸向筒夾式動力刀座

Mori Seiki60-ER40 Axial Driven Tool Holder